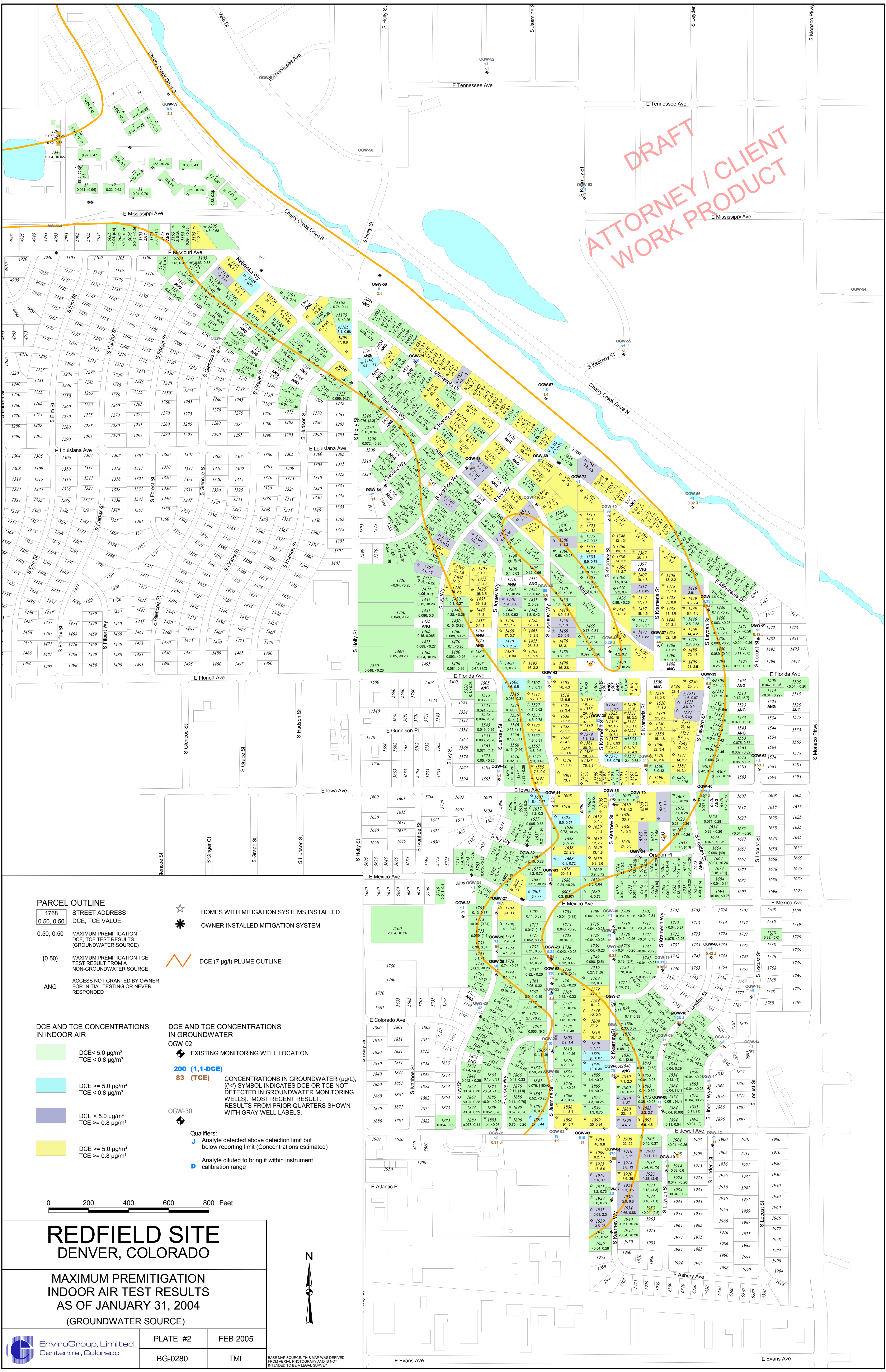


DRAFT  
ATTORNEY / CLIENT  
WORK PRODUCT



**PARCEL OUTLINE**  
 1768 STREET ADDRESS  
 0.50, 0.50 DCE, TCE VALUE

0.50, 0.50 MAXIMUM PREMITIGATION DCE, TCE TEST RESULTS (GROUNDWATER SOURCE)

{0.50} MAXIMUM PREMITIGATION TCE TEST RESULT FROM A NON-GROUNDWATER SOURCE

ANG ACCESS NOT GRANTED BY OWNER FOR INITIAL TESTING OR NEVER RESPONDED

**DCE AND TCE CONCENTRATIONS IN INDOOR AIR**

- DCE < 5.0 µg/m³  
TCE < 0.8 µg/m³
- DCE ≥ 5.0 µg/m³  
TCE < 0.8 µg/m³
- DCE < 5.0 µg/m³  
TCE ≥ 0.8 µg/m³
- DCE ≥ 5.0 µg/m³  
TCE ≥ 0.8 µg/m³

**DCE AND TCE CONCENTRATIONS IN GROUNDWATER**

OGW-02 EXISTING MONITORING WELL LOCATION

200 (1,1-DCE)  
83 (TCE)

CONCENTRATIONS IN GROUNDWATER (µg/L). ("<" SYMBOL INDICATES DCE OR TCE NOT DETECTED IN GROUNDWATER MONITORING WELLS). MOST RECENT RESULTS FROM PRIOR QUARTERS SHOWN WITH GRAY WELL LABELS.

Qualifiers:  
 J Analyte detected above detection limit but below reporting limit (Concentrations estimated)  
 D Analyte diluted to bring it within instrument calibration range

# REDFIELD SITE

## DENVER, COLORADO

### MAXIMUM PREMITIGATION INDOOR AIR TEST RESULTS AS OF JANUARY 31, 2004 (GROUNDWATER SOURCE)

	PLATE #2	FEB 2005
	BG-0280	TML

BASE MAP SOURCE: THIS MAP WAS DERIVED FROM AERIAL PHOTOGRAPHY AND IS NOT INTENDED TO BE A LEGAL SURVEY